



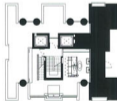
## Apartment 60, City of London

**Apartment 60 is a leading example of the value of regenerating Heritage listed buildings. Its success is in the preservation of the interior volumes and injection of modern materials against the original fabric.**

Extensive works to Apartment 60, within the listed Barbican estate, aimed to preserve the existing structure, the unusual spatial volumes and raw materials with minimal intervention of new building work.

The original 420m<sup>2</sup> footprint was increased by partitioning off a 70m<sup>2</sup> one-bedroom flat on the upper floor (later sold on) and replacing a mezzanine floor. The residence provides an 80m<sup>2</sup> master suite with study area, sleeping area, and a bathroom pod. The pod separates the living, bathing and dressing areas without touching the existing concrete structure.

In the courtyard entrance, a raftering timber stair was replaced with a Corten steel stair and water feature, the largest new-built element in the Barbican since its completion. Corten is self-protecting and continually changes in colour and texture, complementing the colour of the Barbican brickwork and the rawness of the bush-hammered concrete.



Markus Perle floor plan

Completed June 2006  
E Confidential

Architect	Markay and Partners
Engineer	Frost Stewart, RIBA

Top Left: Courtyard  
Top Right: Corridor  
Bottom Left: Master Bedroom